

RB25DET Quest Alternator Retrofit Bracket

By Steve (ninety1two40)

steve@kloptech.com

Required Items:

- 6" length of 1" angle steel, 1/8" thick
- 1-1/4" x 1/4" bolt with washer and nut
- Drill with various bits
- Grinder
- Welder
- Hacksaw/ Sawzall

1) Cut two pieces off the piece of angle steel, one 3" piece and one 1-7/8" piece.



2) Notch 1-1/8" out of the 3" piece like so:



3) Grind the surfaces to be welded together and round the corner on the 3" piece.



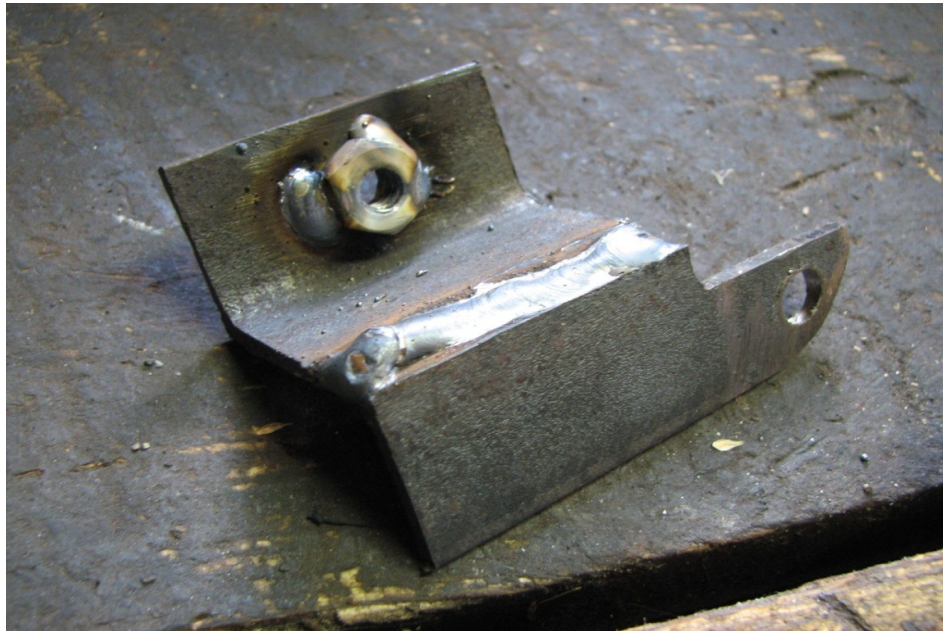
4) Weld up the pieces like so, note the measurement from the face of the bracket to the back, 1-5/16"



- 5) Drill the two holes, the top hole is just centered for the 1/4" bolt and the right hole is larger and close to the edge so the bracket clears the alternator pulley/belt.



6) Install the nut and bolt on the bracket and tack weld the nut in place, this is optional but it makes it easier to install the bracket.



7) You should either paint or powder coat the bracket to protect it from rusting. Here's the picture of my old bracket installed. Keep in mind that you will have to drill out the lower alternator mounting holes to make the Quest alternator to fit, you should not have to drill or modify the engine block or the original alternator bracket. Always test fit the bracket to make sure it doesn't hit the alternator when the belt is fully tightened (use the factory belt tensioner).

